



**WE ARE SFILTRACE**

**WE DELIVER A FUNCTIONAL  
ENERGY SAVING SOLUTION**



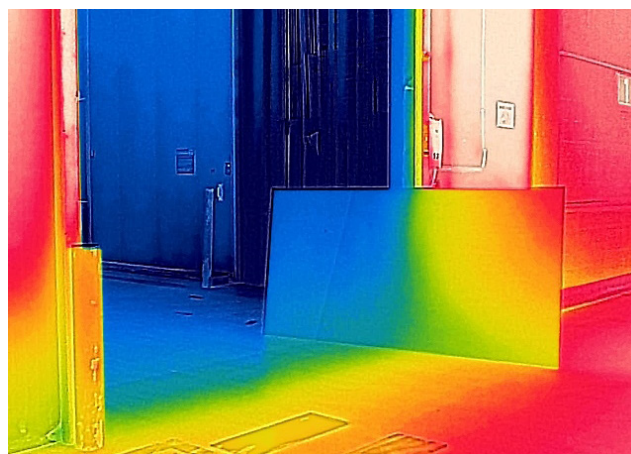
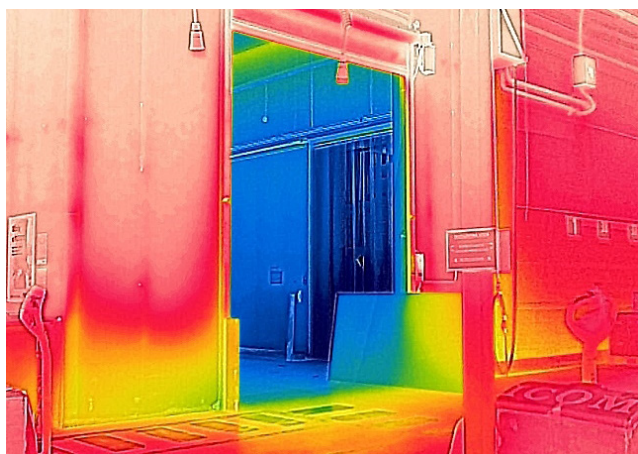
# THERMAL CAMERA IMAGES

**Did you know that a narrow air stream can separate two spaces with different temperatures from each other, thus preventing heat losses with an efficiency of 65%?**

## **Invisible Air Doors AIRSTOP®**

They use a small amount of air supplied to the room with a high air velocity. They can be smoothly adjusted from as low as 0.1 m/s air velocity. It is also one of the reasons why this allows them to separate the required space in its entire length.

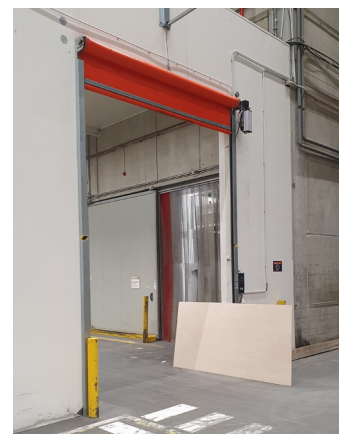
**It is the same as separating two spaces with different temperatures from each other by a mere cut of a knife.**



In the above real-life installation, the Invisible Air Door AIRSTOP® separates two spaces from each other: a cooled warehouse with a temperature of +4°C from a conventional warehouse with a temperature of +18°C.

The horizontal unit **AS45K** used in the gate of 4.5 x 3.0 m (H x W) in size encloses the space in its entire length.

It can be used to separate two temperatures ranging from -30°C to +40°C.



[www.youtube.com/  
c / S F I L T R A C E](http://www.youtube.com/c/SFILTRACE)

**Visit our YouTube channel and watch our video recorded by a thermal camera. You will find an explanation there how it is possible and very effective to separate two spaces with different temperatures from each other using a narrow air stream.**



**Sfiltrace s.r.o.**

+420603275083, [info@sfiltrace.cz](mailto:info@sfiltrace.cz), [www.sfiltrace.cz](http://www.sfiltrace.cz)

Zengrova 607, 280 02 Kolin IV, Czech Republic

ID: 07015950, VAT ID: CZ07015950, Incorporated with the Municipal Court of Prague, File Ref. C 292812